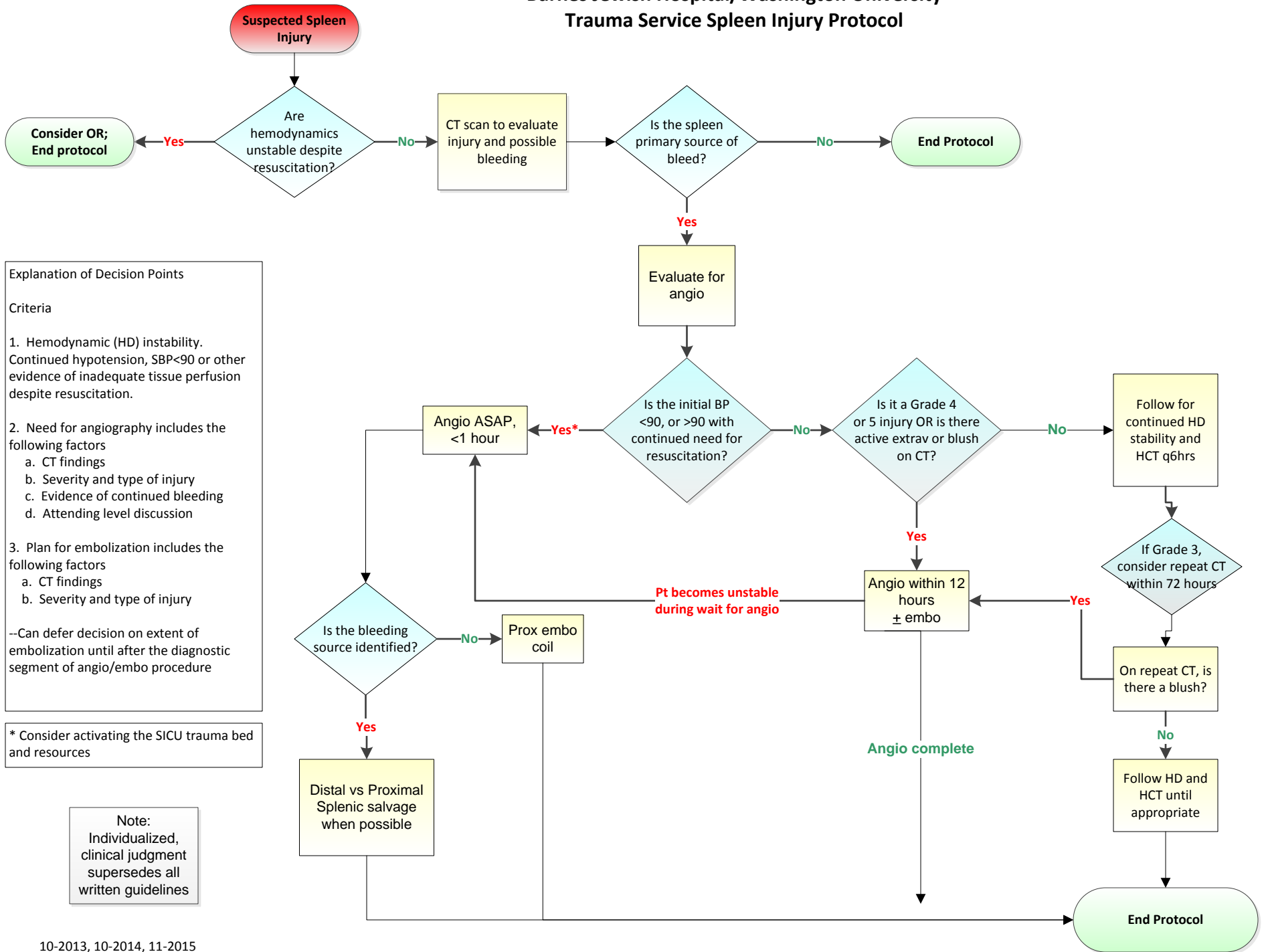


Barnes Jewish Hospital/Washington University Trauma Service Spleen Injury Protocol



Explanation of Decision Points

Criteria

- Hemodynamic (HD) instability. Continued hypotension, SBP<90 or other evidence of inadequate tissue perfusion despite resuscitation.
- Need for angiography includes the following factors
 - CT findings
 - Severity and type of injury
 - Evidence of continued bleeding
 - Attending level discussion
- Plan for embolization includes the following factors
 - CT findings
 - Severity and type of injury

--Can defer decision on extent of embolization until after the diagnostic segment of angio/embo procedure

* Consider activating the SICU trauma bed and resources

Note:
Individualized, clinical judgment supersedes all written guidelines