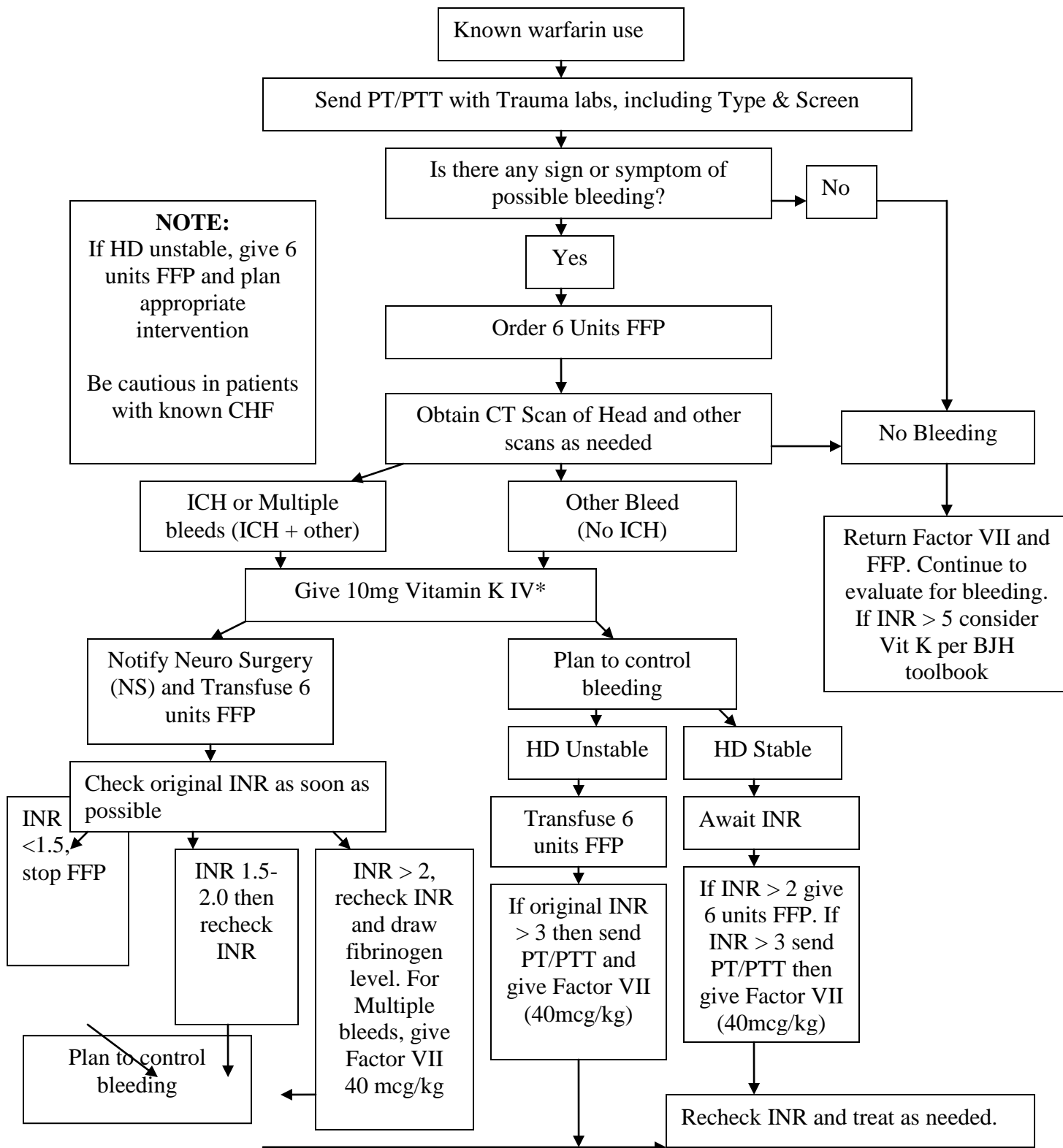


**Barnes Jewish Hospital/Washington University  
Trauma Service Rapid Reversal Pathway (RRP)  
Known Warfarin Use Pathway**



\*Vitamin K should be given over 30 minutes.

\*Call Blood Bank x23385 when T&S sent & identify pt as being in RRP

Note: Individualized, clinical judgment supercedes all written guidelines.